



CHAMPIONS  
FOR WILDLIFE



# Wild for Art Programs

Champions for Wildlife offers standards-aligned lessons for students that help students become wildlife champions as they engage in art activities.

## Wild for Art Programs:

- Wild for Hellbenders
- Wild for Monarchs
- Wild for Turtles
- Wild for Pollinators
- Wild for Red Wolves
- Wild for Owls
- Wild for Birds
- Wild for Bats
- Nature in Your Backyard

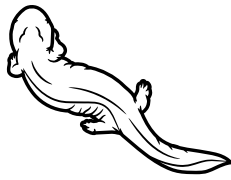


Schedule  
a program!



# Wild for Art Programs

## K-5 NC State Standards Alignment



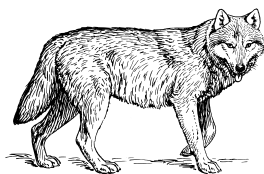
**Wild for  
Hellbenders**

K.L.1 Compare characteristics of animals  
1.L.1 Connecting human behavior with animal survival  
1.L.2 Understanding needs of living organisms  
2.L.1 Understand animal life cycles  
2.L.2 Compare organisms to their parents  
4.L.1 Understand effects of habitat changes on animal survival  
5.L.2.2 Classify organisms in an ecosystem  
5.L.2.3 Interconnected relationships in ecosystems



**Wild for  
Monarchs**

K.L.1 Compare characteristics of animals  
1.L.2 Understanding needs of living organisms  
2.L.1 Understand animal life cycles  
2.L.2 Compare organisms to their parents  
3.L.2 Understand how plants survive in their environments  
4.L.1 Understand effects of habitat changes on animal survival  
5.L.2.3 Interconnected relationships in ecosystems

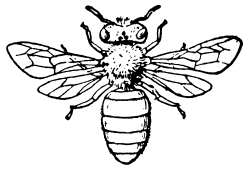


**Wild for Red  
Wolves**

K.L.1 Compare characteristics of animals  
1.L.1 Connecting human behavior with animal survival  
1.L.2 Understanding needs of living organisms  
2.L.2 Compare organisms to their parents  
4.L.1 Understand effects of habitat changes on animal survival  
5.L.2.2 Classify organisms in an ecosystem  
5.L.2.3 Interconnected relationships in ecosystems

# Wild for Art Programs

## K-5 NC State Standards Alignment



### Wild for Pollinators

- K.L.1 Compare characteristics of animals
- K.P.1 Understand positions of organisms in the environment
- 1.L.1 Connecting human behavior with animal survival
- 1.L.2 Understanding needs of living organisms
- 3.L.2 Understand how plants survive in their environments
- 4.L.1 Understand effects of habitat changes on animal survival
- 5.L.2.2 Classify organisms in an ecosystem
- 5.L.2.3 Interconnected relationships in ecosystems



### Wild for Birds

- K.L.1 Compare characteristics of animals
- 1.L.1 Connecting human behavior with animal survival
- 1.L.2 Understanding needs of living organisms
- 2.L.1 Understand animal life cycles
- 2.L.2 Compare organisms to their parents
- 3.L.2 Understand how plants survive in their environments
- 4.L.1 Understand effects of habitat changes on animal survival
- 5.L.2.3 Interconnected relationships in ecosystems



### Wild for Bats

- K.L.1 Compare characteristics of animals
- 1.L.2 Understanding needs of living organisms
- 2.L.1 Understand animal life cycles
- 2.L.2 Compare organisms to their parents
- 3.L.2 Understand how plants survive in their environments
- 4.L.1 Understand effects of habitat changes on animal survival
- 5.L.2.2 Classify organisms in an ecosystem
- 5.L.2.3 Interconnected relationships in ecosystems

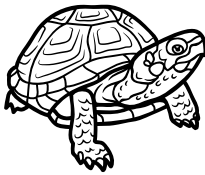
# Wild for Art Programs

## K-5 NC State Standards Alignment



### Nature in your Backyard

- K.L.1 Compare characteristics of animals
- K.P.1 Understand positions of organisms in the environment
- 1.L.1 Connecting human behavior with animal survival
- 1.L.2 Understanding needs of living organisms
- 2.L.1 Understand animal life cycles
- 3.L.2 Understand how plants survive in their environments
- 4.L.1 Understand effects of habitat changes on animal survival
- 5.L.2.2 Classify organisms in an ecosystem
- 5.L.2.3 Interconnected relationships in ecosystems



### Wild for Turtles

- K.L.1 Compare characteristics of animals
- 1.L.1 Connecting human behavior with animal survival
- 1.L.2 Understanding needs of living organisms
- 2.L.1 Understand animal life cycles
- 2.L.2 Compare organisms to their parents
- 4.L.1 Understand effects of habitat changes on animal survival
- 5.L.2.2 Classify organisms in an ecosystem
- 5.L.2.3 Interconnected relationships in ecosystems



### Wild for Owls

- K.L.1 Compare characteristics of animals
- 1.L.1 Connecting human behavior with animal survival
- 1.L.2 Understanding needs of living organisms
- 2.L.1 Understand animal life cycles
- 2.L.2 Compare organisms to their parents
- 3.L.2 Understand how plants survive in their environments
- 4.L.1 Understand effects of habitat changes on animal survival
- 5.L.2.3 Interconnected relationships in ecosystems

# Wild for Art Programs



## *Join Our Mission*

Are you interested in a program with Champions for Wildlife? Our programs are a partnership between our organization and classroom teachers. We desire to come together with teachers to integrate our programming with standards being taught and projects being conducted in your classroom.

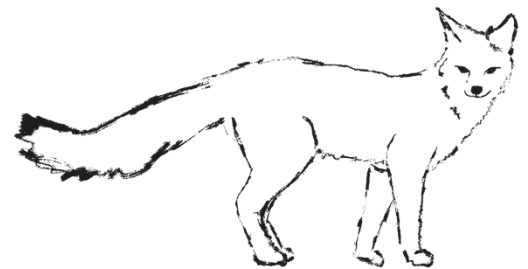
We believe the more students learn about wildlife, the more they will start to love it and the stronger their desire will grow to protect it. When we align our curriculum with state-standards and classroom practices, we are creating a team of individuals with a shared goal of supporting students and spreading environmental literacy.

# What to Expect:



*Because we desire for this connection to be a partnership that develops over time, we expect our teachers to:*

1. Allow us to take photos/videos of students while they are participating with us (as permission has been granted).
2. Fill out a pre- and a post-survey to let us know where your students are at, how we are doing, and to help us track student growth.
3. Ask classroom parents to volunteer- we would love to have 1 or 2 of them join in our programming to help out, especially when we get to the art activity.
4. Schedule a phone call with us ahead of the program to align our visions for the program. This does not have to be a long phone call, just 5-10 minutes.
5. Sign up for our newsletter. We will subscribe all teachers to the newsletter to keep up with our programming.



# What to Expect:



## *Frequently Asked Questions*



### **1. How long do our programs last?**

Our programs typically run 1 hour. It is better for us to have 1 hour because it gives students more of an opportunity to dive into the art portion.

### **2. What does a typical program look like?**

Our programs consist of a wildlife lesson and an art activity. The wildlife lesson lasts about 15 minutes, with the art activity lasting 30 minutes. We will bring in all of the art supplies along with handouts for students, wildlife models (as they fit) and cleaning supplies.

### **3. What standards are we aligned with?**

We align our curriculum with NC science and art standards, Next Generation science standards, social emotional learning standards, and environmental literacy standards.

# How can you help?



## *Ways you can help!*

1. Have your students write thank you notes to Champions for Wildlife that we can share with our grantors and donors.
2. Follow our social media pages on Instagram and Facebook, and share our page with others!
3. If you create a project or lesson as an addition to our programming, share it with us to add to our teacher portal of curriculum.
4. Spread the word about our programming to other teachers in your school and area.
5. If your school has funding that could go towards contributing to the cost of our programming, we would love the support!



***Schedule a lesson with us!***

**Visit our website to learn more:**

<https://championsforwildlife.org/education/>